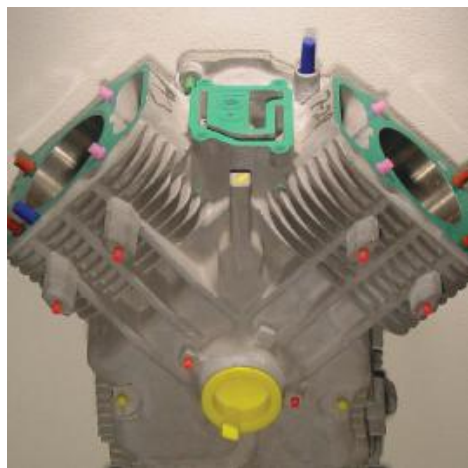


EPSI CUSTOM TAPE MASKING



The EPSI Guarantee means we provide you with the best solutions for your masking needs. Frequently, it's a guaranteed in-stock product like our AL12 Green Tape or our patented Wishbone™ Discs, however, occasionally only a custom shape will do. EPSI can provide these custom pieces as quickly and affordable as standard masking products.

Plotter cutting is a highly customizable and economic process for quickly developing custom solutions for complicated masks and irregular shapes. Additionally, EPSI can kit a set of plotter cut masks on a single roll, reducing masking time and labor costs.

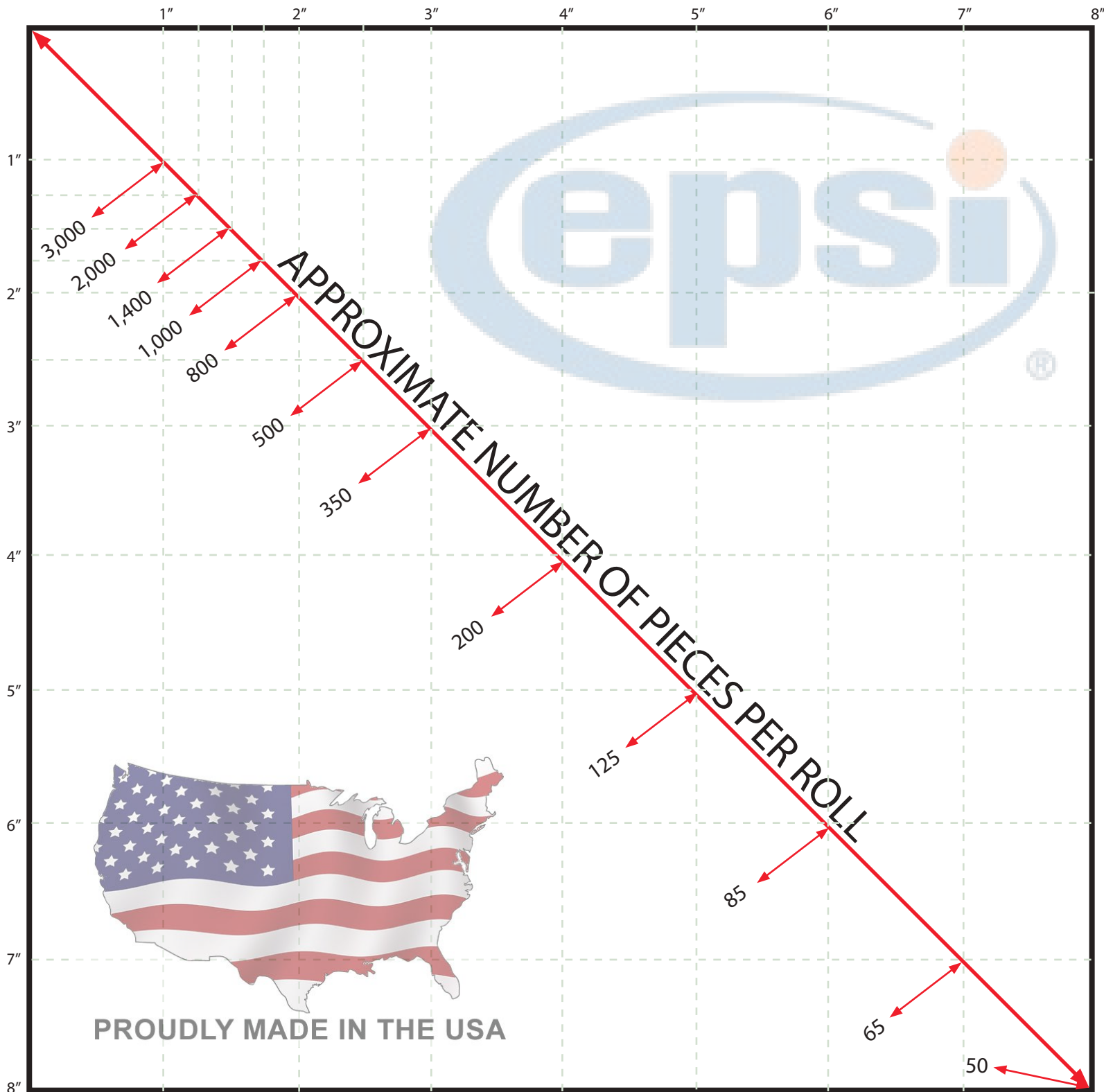


Use the guide inside this brochure to determine the type of tape and number of rolls you require based on the size and quantity or the part to be masked. Our engineering team, with years of experience designing custom shapes and masking products, will design and produce your custom solution based on your parts and/or drawings. Next, our computer-controlled plotter cutter will quickly produce your custom tape solution, resulting in a perfect mask every time.

EPSI.com • 866-ASK-EPSI



USE THE GRID TO ESTIMATE THE NUMBER OF PIECES PER 10 YARD ROLL:



****Ask About Our High-Volume Flex Die Options!***

EXAMPLE:

If each piece is about 1" x 1", you'll get up to 3,000 masks.
 If each piece is about 5" x 5", you'll get up to 125 masks.



EPSI CUSTOM TAPE DESCRIPTIONS:

- **Maximum Temp: 325° F**
- Standard: 8" W x 10 Yards L*
- High-Temp Rubber Adhesive
- Tough, Smooth Crepe Paper Carrier
- Tear Resistant & Solvent Resistant
- Straight, Clean Paint Lines

C21

A12

- **Maximum Temp: 400° F**
- Standard: 8" W x 10 Yards L*
- High-Temp Silicone Adhesive
- 2.0mil PET Carrier
- 3.5mil Total Thickness
- No Residue - Clean Removal



- **Maximum Temp: 430° F**
- Standard: 8" W x 10 Yards L*
- High-Temp Silicone Adhesive
- 2.0mil Polyimide Carrier
- 3.5mil Total Thickness
- No Residue - Clean Removal

O12

K22

- **Maximum Temp: 600° F**
- Standard: 8" W x 10 Yards L*
- High-Temp Silicone Adhesive
- 2.0mil Polyimide Carrier
- 3.5mil Total Thickness
- No Residue - Clean Removal

****Ask About Our High-Volume Flex Die Options!***

ORDER IN 3 EASY STEPS:

1

Send an email to SALES@EPSI.COM and provide the following info:
1) What is your process? 2) Max temp for process? 3) Provide a CAD drawing highlighting the area you want masked in SLDPRT or STEP format. 4) Expected monthly/annual usage for the mask.

2

EPSI will provide a quote within three business days. This will detail the material selected, cost per roll, quantity of kits per roll and a reference picture of your mask.

3

Send a purchase order to SALES@EPSI.COM with contact name and mailing address. EPSI will send samples for approval prior to production. Once approved, you can expect to receive your order within 5 business days.
(Quantity of 10 rolls or less within 5 business days.)



THE EPSI GUARANTEE



EPSI MAKES IT EASY WITH...

- ✓ 100% In-Stock Guarantee on All Your High Usage Masking Products
- ✓ Best-in-Class Partner Programs such as Vendor Managed Inventory (VMI)
- ✓ Innovative Product Design and Development Initiatives
- ✓ World-Class Line of Masking/Coating Tapes
- ✓ Fast Delivery! With Multiple Warehouse Locations, We're Closer Than You Think
- ✓ Industry Leading Customer Service Working Towards Your 100% Satisfaction
- ✓ World-Class Production Team to Bring You Products with Zero Defects
- ✓ Multiple Internal Checkpoints to Make Sure Your Order is Perfect
- ✓ A Partnership Focus with the Goal of Increasing Your Efficiency and Reduced Costs
- ✓ Dedicated In-House R&D Department When You Need a Custom Solution

GLOBAL SERVICE IN YOUR BACKYARD; WE'RE CLOSER THAN YOU THINK

EPSI USA HEADQUARTERS:

866-ASK-EPSI • www.epsi.com • sales@epsi.com • 4221 Courtney Rd • Franksville, WI 53126 USA

EPSI CANADA:

155 Copernicus Blvd
Brantford, N3P 1N4
www.epsi.com

EPSI CHINA:

No. 777-9 Qiming Rd
NINGBO China
www.epsi.com

EPSI USA DISTRIBUTION CENTERS:

EPSI CALIFORNIA • 13855 Struikman Rd • Cerritos, CA 90707 USA
EPSI CONNECTICUT • 68 E. Dudley Town Rd, Unit A • Bloomfield, CT 06002 USA
EPSI SOUTH CAROLINA • 120 Corporate Dr, Unit K • Spartanburg, SC 29303 USA
EPSI TEXAS • 1401 Royal Pkwy, Unit A • Euless, TX 76040 USA
EPSI WISCONSIN • 4237 Courtney Rd • Franksville, WI 53126 USA

EPSI EUROPE GmbH:

Duetestr.3
49205 Hasbergen
Germany
www.epsi.com
info.eu@epsi.com

EPSI MEXICO:

Av. Agustin Melgar
#3311 int 5 Colonia
Nombre de Dios
Chihuahua Mexico
www.epsi.com

EPSI USA MANUFACTURING FACILITIES:

EPSI FLORIDA • 1245 16th St • Vero Beach, FL 32960 USA
EPSI MICHIGAN • 1125 Morren Ct • Wayland, MI 49348 USA
EPSI MISSOURI • 6800 N. Broadway • St. Louis, MO 63147 USA
EPSI NORTH CAROLINA • 3976 US-64, 74A • Rutherfordton, NC 28139 USA
EPSI TENNESSEE • 70 Athens Dr • Mt. Juliet, TN 37122 USA
EPSI TEXAS • 1401 Royal Pkwy, Unit A • Euless, TX 76040 USA
EPSI WISCONSIN • 4220 Courtney Rd, Franksville, WI 53126 USA

