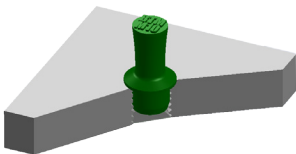


# WE GUARANTEE THAT YOU'LL MASK SMARTER WITH UNIQUE DESIGNS FROM EPSI

## C-BTM

### Blind-Hole Thread Mask Plug

- Designed in Collaboration with a Major OEM for Use on Their Finishing Lines.
- Shallow Design is Ideal for Blind Hole Applications.
- Flange Geometry Masks off Lead-In Chamfers of Threads.

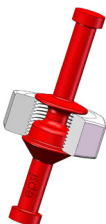


- EPSI's C-BTM product line is the answer to the common problem of masking off blind threaded holes with several features engineered to ensure complete sealing of threaded holes and the surrounding chamfer.

## C-DWP

### Double Washer Pull Plugs

- Designed in Collaboration with a Major OEM for Use on Their Finishing Lines.
- Masks Entry and Exit Threads Simultaneously.
- Provides Positive Seal



- Maximum Temperature 600° F (315° C)
- Removes Cleanly After Use with No Shrinkage

Selling to Heavy Industry? Call Us Today!



SEE US AT



FINISHING PAVILION

NOV 11-13, 2014 | ATLANTA

[fabtechexpo.com](http://fabtechexpo.com)

BOOTH #B604

4221 Courtney Road  
Franksville, WI 53126  
USA  
Phone: 866-ASK-EPSI  
Fax: 866-FAX-EPSI  
Email: [sales@epsi.com](mailto:sales@epsi.com)  
Web: [www.epsi.com](http://www.epsi.com)